



WORKING WITH INTEGRITY.

CANAM



A vertical industrial crane hook and chain is positioned on the left side of the page. The hook is at the top, and the chain extends down to a metal plate. The metal plate is rectangular with two circular holes and is positioned horizontally. The background is white.

integrity

OUR MISSION IS TO DEVELOP AND PRESERVE LONG TERM RELATIONSHIPS WITH OUR CLIENTS BY UNDERSTANDING THEIR NEEDS, DELIVERING COST EFFECTIVE AND TIMELY SERVICES AND PRODUCTS, WHILE MAINTAINING OUR REPUTATION OF QUALITY, INNOVATION AND FAIRNESS.

WE HAVE PUT IN PLACE THE FOUNDATIONS
TO ENSURE WE DELIVER ON OUR PROMISE OF
INTEGRITY AT ALL TIMES.

Integrity, quality, flexibility and innovation are characteristics that distinguish Canam as a leading construction company. Our goal is to provide the highest level of workmanship whilst delivering cost effective and timely services to our clients.

Our staff are trained to the highest standard and their goal is to create distinctive design ideas and develop streamlined methods of construction that suit each project specifically. We are proactive in finding innovative solutions and committed to making sure our clients are satisfied with the process, the outcome and the value for their construction dollar.



flexibility + innovation



We believe the foundation of our success lies in our commitment to understanding and meeting our client's needs so we are able to start each project with a clear picture of their vision and expectations.

With over 60 years experience in construction we understand the process and the industry and have the confidence to undertake the most challenging and technically complex projects.

ONE ASPECT THAT WILL NEVER CHANGE IS OUR COMMITMENT
TO INTEGRITY.

WE HAVE THE RIGHT PEOPLE AND SYSTEMS IN PLACE TO DELIVER YOUR PROJECT WITH ABSOLUTE CONFIDENCE.

Canam is one of the few contractors employing direct labour in all of our operating divisions. Currently in excess of 60 carpenters / joiners are directly employed by Canam.

Employing direct labour on the traditional builder's trades means that the concrete and carpentry work is carried out in-house. This gives Canam greater control over time, quality and costs.

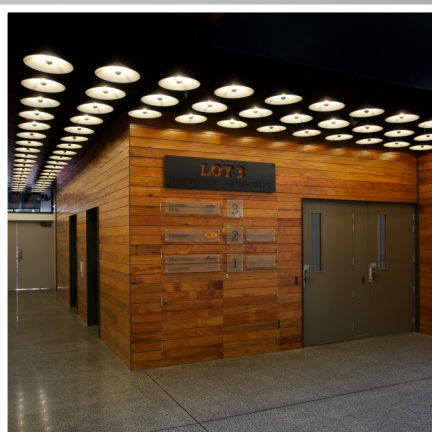
We fully appreciate the critical importance of planning, communication and transparency in all projects.

At Canam we ensure that our teams are focussed on the complete project through all phases of the process and seek to build close and cooperative relationships with the client, consultant team and the wider project stakeholders.

infrastructure + procedure



safety



We take Health and Safety seriously in everything that we do and Canam has achieved pre-qualification and registration at the highest possible levels, including:

- Site Wise Green
- Site Wise Level 3
- Site Safe Membership
- Registered Master Builders Association
- SHE Prequalification local authority approved Contractor
- Stamford Insurance Approved Builder
- impac Prequal approved Contractor

MANY OF OUR CLIENTS COME BACK TO US FOR OTHER PROJECTS
AND WE CONSIDER THIS TO BE A HUGE COMPLIMENT.

BUILDING FOR TOMORROW REQUIRES
RESPONSIBILITY AND ACCOUNTABILITY IN
EVERYTHING WE DO.

Our teams are at the forefront of environmental thinking and initiatives and are committed to providing construction solutions that enhance our community.

Ethical and sustainable buildings are the way forward and at Canam we fully embrace 'green' policies.

We are consistently proactive in updating and training key staff in the latest environmental policies and procedures so we can confidently advise our clients.

As leaders in the construction industry we undertook to meet and surpass many of the current environmental initiatives in the design and development of our own Head Office building.



ethical and sustainable





Working as partners



By truly understanding your business and working as partners we can add value and create the ideal property solution.

This spirit of co-operation extends to all stakeholders in any development whether they are landowners, tenants, long term investors or the community at large.

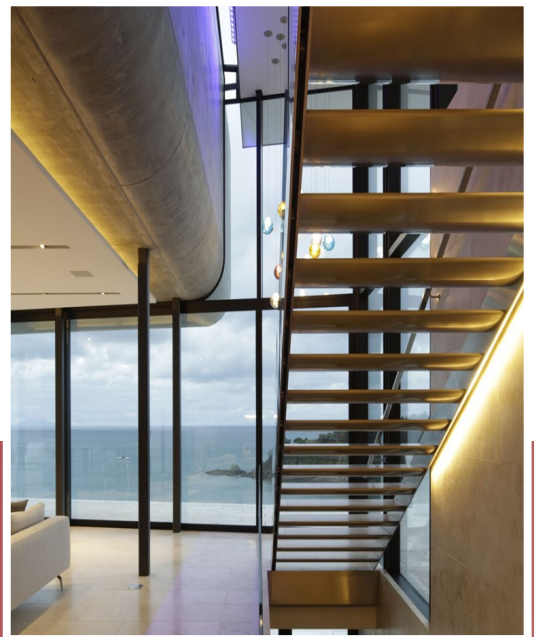
We are also flexible enough to have full participation in a development, or take part in Joint Ventures or Development Agreements with developers, investors, stakeholders and tenants.

WE FOCUS ON ACHIEVING A SUCCESSFUL OUTCOME FOR ALL CONCERNED.



OUR CLIENTS' BUSINESSES HAVE DIVERSE
AND VARIED REQUIREMENTS—NO TWO
PROJECTS ARE THE SAME.

From materials and construction methods to
management techniques and information sys-
tems, Canam is always seeking new and better
ways to help



creativity + innovation + excellence



WORK WITH THE COMPANY THAT WORKS WITH INTEGRITY

With over 60 years in the construction business and an enviable reputation for completing projects on time and on budget., call Canam first to discuss your next project, whatever the size or budget.

CALL CANAM ON +64 9 836 3069

CANAM COMMERCIAL LIMITED

87 Central Park Drive
Henderson
Private Bag 93116
Henderson, Auckland 0650

Ph +64 9 836 3069
Fx + 64 9 837 2449
info@canam.co.nz
www.canam.co.nz

CANAM

